

The
Contemporary
Theatre of Ohio



(formerly CATCO)

JAN 25—
FEB 11

Riffe Center
Studio Two

THE Worries OF Wesley

(Or: How I Learned to Stop
Having Anxiety, or Not Really,
But I Am Trying)

BY JESSICA MOSS
DIRECTED BY
ALAN TYSON



Presenting Sponsor

ON OUR SLEEVES

The Movement for Children's Mental Health

Pay What You Want Sponsor



Appraisal Brokerage Consulting Development

Season Sponsor



by insurance

Funding Provided By:



Season Support



Media and
Advertising Partners



Production Support
Provided By:

Ellie Mental Health
Steven C. Anderson
Fund for New Work
for Young Audiences

TheContemporaryOhio.org



The
Contemporary
Theatre of Ohio

LAND ACKNOWLEDGMENT

We seek to inspire a community of empathy and have a responsibility to recognize the ways in which we benefit from colonization, both historical and ongoing. A Land Acknowledgment is a formal statement that recognizes and respects Indigenous Peoples as traditional stewards of this land and celebrates the resilience and strength that all Indigenous people have shown worldwide.

We acknowledge that in Central Ohio, we are on the traditional homelands of the Shawnee, Potawatomi, Delaware, Miami, Peoria, Seneca, Wyandotte, Ojibwe, and Cherokee Indigenous nations who have strong ties to these lands. Today, individuals from a broad range of Indigenous backgrounds call Columbus and central Ohio home.

We recognize generations who contributed their traditions, hopes, and spirit to make the history that led to this moment. While some have lived on this land for more generations than can be counted, others arrived here hoping for a better life, while others were forcibly taken and brought here against their will. Acknowledging the truth of these realities is critical to building mutual respect and connection.



@OHIOARTSCOUNCIL | #ARTSOHIO | **OAC.OHIO.GOV**

EXPERIENCE ENGAGE TRANSFORM

State and federal dollars through the Ohio Arts Council
supported your arts experience today.

WHERE WILL THE ARTS TAKE YOU NEXT?
VISIT **ARTSINOHIO.COM**



A NOTE FROM THE DIRECTOR

I would have never imagined being the 90s kid watching *Doug*, *Hey Arnold*, *Rugrats*, and my all time favorite *Bebe's Kids* and making that the inspiration behind *The Worries of Wesley*. Even though they were cartoons, they helped me cope and helped me to learn about life. How to treat others and how to treat myself.

The Worries of Wesley (Or: How I Learned to Stop Having Anxiety, or Not Really, But I Am Trying) is the very same for audiences today. The goal is not to hit people over the head with how to cope with anxiety but how do we live and breathe with it and help each other through it, together.

Wesley can be seen in each and everyone of us. And we must all remember that perfection doesn't exist and it's all about progress. With the help of her friends and family and a couple of puppets, you and Wesley will go on a journey together in order to find your own way of dealing with life when it just gets a little too overwhelming.

Thank you for joining this amazing cast and crew and I hope you laugh, learn, smile, grow and take home these lessons you see today. Talk about your own experiences with each other, work together to help your friend, child, teacher, neighbor, and parent; be comfortable and open to talking about their feelings. And when it can be all too much, don't forget to take it one day at a time and remember to breathe!

Alan Tyson

THE CONTEMPORARY BOARD OF DIRECTORS

EXECUTIVE COMMITTEE

Ed Hofmann, *President*
ASG-Chute Gerdeman

Joshua Schonauer, *Vice President*
Nationwide

Blythe Coons, *Secretary*
Articulation, Inc.

Kathleen M. Fox, *Treasurer*
Community Strategy Partners, LLC

DIRECTORS

Bill Balderaz, Futurety

Drew Factor, The Ohio State University
Alumni Association

Mary Filice, Dr. Mary, LLC

Katerina Fuller, Transit Arts

Christopher Green,
Crabbe Brown & James, LLP

Dr. Jeff S. Keyes,
Central Ohio Newborn Medicine, Inc.

Alexa Konstantinos, The College of Wooster

Brad Richey, Turner

Timothy S. Wilson,
Kohrman Jackson & Krantz, LLP

THE CONTEMPORARY STAFF

Leda Hoffmann, Artistic Director

Christy Farnbauch, Executive Director

Steve Hiller, Education Director

Tony Koehler, Production Manager

Beth Graham, Development Manager

Summit J Starr, Administrative & Casting Coordinator

Joy Heino, Education Coordinator

Leslie Wright, House Manager

THE CONTEMPORARY / CAPA | ADMINISTRATIVE STAFF

Michael Daniels, Senior Accountant

Rhea Shaffer, Director of Ticketing

Allison Walker, Shared Services Ticketing Specialist

Amanda Wheeler, Grants Manager

Hillary Thompson, Director of Human Resources

Lauren Paxton, Human Resources Manager

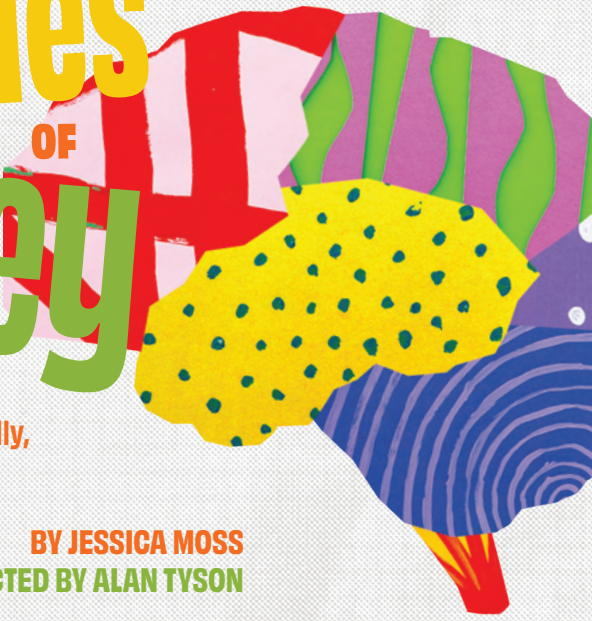
Chris Wallace, Payroll & Benefits Accountant

**The
Contemporary
Theatre** of Ohio
presents

Leda Hoffmann
ARTISTIC DIRECTOR

Christy Farnbauch
EXECUTIVE DIRECTOR

THE **Worries** OF **Wesley**



(Or: How I Learned to Stop
Having Anxiety, or Not Really,
But I Am Trying)

BY JESSICA MOSS
DIRECTED BY ALAN TYSON

Stephanie Gerken
SCENIC DESIGNER

Baylee Sheets
COSTUME DESIGNER

Lonelle Yoder
PROPS DESIGNER

Kaitlyn Pfeifer
STAGE MANAGER

Amber Whatley
LIGHTING DESIGNER

Jesse Charles
SOUND DESIGNER

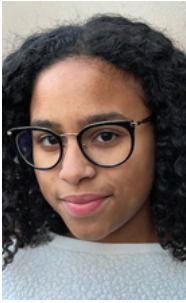
Nicholas Wilson
CHOREOGRAPHER

Erin Flanagan
ASSISTANT STAGE MANAGER

The videotaping or other video or audio recording of this production is strictly prohibited.

THE Worries OF Wesley

WESLEY



**SIMONE
DEAN** she/her

**DAD/ MR. SNOOK/
WESLEY'S LUNGS**



**BRIAN C.
GRAY** he/him

CAST

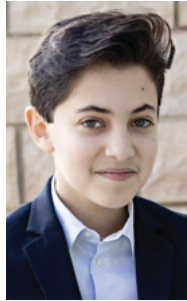


**PAPA/
WESLEY'S BRAIN**



**JUSTIN
KING** he/him

**CAMERON/
WESLEY'S SENSES**



**ZEKE
MOSES** he/him

**PARKER/
WESLEY'S HEART**



**ANISAH
AZIZ** she/her

ADDITIONAL PRODUCTION STAFF

Tony Koehler
PRODUCTION MANAGER

Rowan Winterwood
MASTER ELECTRICIAN

Augusta Kinzel
**COSTUME COORDINATOR
& WARDROBE**

Isaac Steinhour
TECHNICAL DIRECTOR

Set Built by CCT Scenic

SPECIAL THANKS

Mark Boughton, Tasty Dawg

CAST BIOS

SIMONE DEAN [SHE/HER] (**Wesley**) is thrilled to have the privilege of playing Wesley in *The Worries of Wesley* at The Contemporary. Most recently she was Sam in *The Water Gun Song*, Ginny in *George and the Hidden Dragon*, and Brigitta in her school's production of *The Sound of Music*. In her free time, she enjoys reading, spending time with her dog, Anya, and participating in Power of the Pen, a statewide writing competition. She wants to thank her family for their love and support.

BRIAN C. GRAY [HE/HIM] (**Dad/Mr. Snook/Wesley's Lungs**) is a singer/actor living on the East Side of Columbus. Brian carries two music degrees: a Bachelor of Music in Vocal Performance from Otterbein University, and a Master of Music in Music Theatre from Oklahoma City University. Post graduating Brian performed with various theatre companies including Playhouse on the Square in Memphis, TN, Lexington Children's Theatre in Lexington, KY, and the Springer Opera House in Columbus, GA. Locally, Brian has performed in numerous theatre productions with several companies, including: The Contemporary (previously CATCO), Columbus Children's Theatre, Available Light Theatre, Short North Stage, and more. Brian now teaches as part of the Adjunct Voice Faculty at Otterbein University and directs the OutLoud BIPOC Theatre Collective at Olentangy Orange High School in central Ohio.

JUSTIN KING [HE/HIM] (**Papa/Wesley's Brain**) is thrilled to be making his Contemporary debut! He was last seen in the world premiere immersive theatre production of *The Sleepwalker of Holstenwall* with Columbus Children's Theatre. Next up, Justin returns to the Cincinnati Fringe Festival and travels to Lisbon for his group's 48 Hour Film Project short film screening. An Ohio native, Justin received his BFA in Acting from Wright State University and has performed on stages all across the Midwest. Many thanks to his family, friends, and the Columbus theatre community for their support!

ZEKE MOSES [HE/HIM] (**Cameron/Wesley's Senses**) is overjoyed to be making his debut at The Contemporary Theatre of Ohio in this incredible production! Some recent credits include *Fiddler on the Roof* (Reb Nahum), *Ragtime* (Ensemble), *Descendants* (Carlos), *School of Rock* (Lawrence), *Newsies Jr.* (Jack Kelly), and *Newsies* (Les), which earned him a Roundtable Award Nomination. When not onstage, Zeke is an 8th grader at Bexley Middle School. Zeke would like to thank the entire cast and creative team for making this show possible and for making this an incredible experience for him.

ANISAH AZIZ [SHE/HER] (**Parker/Wesley's Heart**) is an adventure-loving 5th grader whose fearless spirit has helped her to climb mountain peaks and earn a gray-white belt in Jiu-Jitsu. Her previous performances include playing piano at local recitals and playing Middle Elsa in her school's performance of *Frozen*. This will be her debut performance at The Contemporary Theater. With positivity as her superpower, she is set to illuminate stages and hearts alike with her infectious energy!

PRODUCTION STAFF BIOS

ALAN TYSON [HE/HIM] (**Director**) is thrilled to return to The Contemporary as a director. He wants to thank his loving God, because without Him none of this would be possible, his amazing friends, and his loving and supportive family. His recent directing credit would be co-directing with the great Shanelle Marie, *Good Grief: A Best Friend Play* by Ngozi Anyanwu (The Contemporary) *Mrs. Dunn* by Marjorie O'Neil-Butler (The Columbus Black Theatre Festival). His most recent acting credits include Charity Man in *A Christmas Carol* adapted by Thom Christopher Warren (CAPA & Short North Stage), Walter Lee Younger in *A Raisin in the Sun* by Lorraine Hansberry (Actors Theatre of Columbus), Eddie in *...but you could've held my hand* by Jucoby Johnson (The Contemporary), Gary (Cover) in *Slave Play* by Jeremy O. Harris (Short North Stage), Frank Thorney in *Witch* by Jen Silverman (Available Light Theatre Company) and King in August Wilson's *King Hedley II* (Actors Theatre of Columbus). Also, he starred in the delightful horror comedy film, *Obstacle Corpse* as the loveable Ezra which is out now on Amazon Prime & Tubi. He is so grateful to The Contemporary and this beautiful funny cast for allowing him access and to be able to create in this beautiful world and he thanks all involved for this opportunity. Remember to live your life, love yourself and others, and laugh like no one is watching - one day at a time!
All Socials: @AlanELTyson / www.Alan-Tyson.com

STEPHANIE GERKENS [SHE/HER] (**Scenic Designer**) is very excited to be working on this new script with The Contemporary Theatre. Her set designs for The Contemporary have included; *Evie's Waltz*, *I Am My Own Wife*, *The Story of My Life*, *Boston Marriage*, *The Taste of Sunrise*, and others. She designed *The Pirates of Penzance* at Otterbein Summer Theatre. Teaching scenic design, scene painting, and stagecraft are courses she has taught at Otterbein and Capital Universities. She has enjoyed scene painting at professional scenic studios including Chicago Scenic, Mystic Scenic, Columbus Childrens' Theatre, and Stagecraft Theatricals.

PRODUCTION STAFF BIOS (CONT'D)

AMBER WHATLEY [SHE/HER] (Lighting Designer) is a lighting designer for live performance. Her skills include lighting for theater, dance, concert, and lighting for the camera. Her technical strengths are programming and moving light programming. She was born and raised in Montgomery, Alabama. She then completed her BFA at Savannah College of Art and Design. She has consulted for several theaters and churches in the Southeast U.S. Her MFA graduate studies in Lighting Design at The University of Texas at Austin lead her to the creation of Blackout a workshop and video series in which her objective is to bring lighting design and technology awareness to Black youth and minorities in under supported communities. Her research interests include creating accessible lighting knowledge for BIPOC youth and under supported communities, new works, and non-traditional theater design. As the current Professor of Lighting Design at Belmont University Amber enjoys teaching, freelance designing, and furthering the development of Blackout.

BAYLEE SHEETS [SHE/HER] (Costume Designer) is thrilled to be returning to The Contemporary as a designer! Baylee is a performer and costume designer based in Columbus, OH. She attended Bowling Green State University where she studied Theatre with specializations in Acting, Directing & Costume Design. Her notable roles behind the scenes include working as a costume designer for various shows with Imagine Productions, Available Light, Dublin Jerome High School and The Contemporary Theatre of Ohio. Baylee would like to thank her friends and family for all their support with special thanks to Goblin, Ghoul, Bats and Aaron. Find Baylee on Instagram @BayleeJune

JESSE CHARLES [HE/HIM] (Sound Designer) Born from a love of music, Jesse developed an interest in audio production. In high school, Jesse experimented with and learned how to use the school's audio equipment. Following an internship at WOSU, Jesse earned a certificate from The Recording Workshop in Chillicothe, OH. Since then, he has freelanced all over Columbus, Ohio. Working for Vaud Villities, Imagine Productions, Actor's Theater (Shakespeare In The Park), and The Kings Avenue Players, CCT, The Contemporary Theatre of Ohio, and Red Herring Productions.

LONELLE YODER [SHE/HER] (**Props Designer**) has been loitering about the Columbus theatre scene, in various capacities, for many years – first at the Phoenix Theatre for Children and BlueForms Theatre Group, and, more recently, at Available Light Theatre Company, The Contemporary, Opera Columbus, and Columbus Children's Theatre. When she's not having fun building food props, Lonelle gardens, dabbles in wildlife rehab, and makes jam out of foraged wild fruits.

NICHOLAS WILSON [HE/HIM] (**Choreographer**) Born and raised in Ohio, Nicholas graduated from Eastmoor Academy High School and attended Kent State University's theatre studies program with an emphasis in performance. He has always been fascinated by the intersection of the arts and business administration, and he looks forward to continuing his journey with unwavering dedication. He deeply cherishes the ability to communicate unique artistic expression through the language of dance and aspires to make a positive impact that aims to inspire others. In 2023, Nicholas was nominated for Columbus Business First 40 Under 40 and a Columbus Makes Art Brand Ambassador. Favorite Credits: Jeffrey in *Godspell*, Male Swing in *Chicago*, Buck in *No Return: The Deadly Dance of Bonnie and Clyde*, Bar Patron #1 in *Musical the Musical*, Production Director for Overnight Brew: The 24-Hour Theatre Festival.

KAITLYN PFEIFER [SHE/HER] (**Stage Manager**) is happy to be returning to The Contemporary, where her previous productions include *The Wolves*, *9 to 5 the Musical*, *Prima Donna*, *Head Over Heels*, *Luchadora*, and *Hershel*. Other credits include *Cry it Out* at Available Light Theater; *Carmen* at Opera Columbus; and *The Last Match* and *Charlotte's Web* at B Street Theater in Sacramento, CA.

ERIN FLANAGAN [HE/HIM] (**Assistant Stage Manager**) is excited to work on her first show with The Contemporary Theatre of Ohio! Other theatre credits are with Actors' Theatre of Columbus, they include Stage Manager for *A Raisin in The Sun*, SM for *Dracula: A Feminist Revenge Fantasy*, and ASM for *King Hedley II*. She hopes you enjoy the show!

ADDITIONAL PRODUCTION BIOS

TONY KOEHLER [HE/HIM] (**Production Manager**) is teaching artist, actor, director, and designer, most recently was production manager at GALA Hispanic Theatre in Washington, D.C., and a teaching artist at The Theatre Lab School of Dramatic Arts also in Washington, D.C. Other positions include properties master at The Folger Shakespeare Theatre, and theatre credits at Constellation Theatre Company and Rainbow Theater Project in Washington, D.C., and Piven Theatre Workshop, Redmoon Theatre, and Northwestern University in Chicago. A graduate of the University of Kentucky with a BA in theatre, he has received numerous awards including a 2019 Helen Hayes Award for Best Musical and Best Ensemble and Broadway World's 2019 regional award for Best Musical in the Small Professional Theatre Category for *FAME: The Musical*, and a 2017 Helen Hayes Award for the Spanish language premiere of *In the Heights*. In addition to his theatre background, he also has several years of business management experience as an operational manager at JCrew.

ROWAN WINTERWOOD [SHE/HER] (**Master Electrician**) is a lighting designer, director, stage manager, artist educator and aerialist. She is the Associate Artistic Director and Lighting Designer/Engineer for Actors' Theatre of Columbus, where she will be directed *Love's Labours Lost* this past July. Selected lighting design credits include Available Light Theatre (*Everybody, Witch*), Actors' Theatre of Columbus (*Hamlet 1603, Eurydice*), Columbus Children's Theatre (*A Christmas Story*), The Contemporary (*Luchadora!, Hershel and the Hanukkah Goblins*), and Denison University (*You On The Moors Now*; co-design: *Pippin, Company*)

AUGUSTA KINZEL [SHE/HER] (**Costume Coordinator & Wardrobe**) is a Coshocton, Ohio native. She is a recent grad from Muskingum University, where she received her B.A. in history and theatre. During her time at Muskingum, Augusta acted, designed, and worked on tech staff. Her favorite shows at Muskingum were *The Gypsy Woman* and *Seussical*. She is excited to be working at The Contemporary this season. Enjoy the show!

ADDITIONAL PRODUCTION BIOS (CONT'D)

ISAAC STEIN HOUR [HE/HIM] (**Technical Director**) is a graduate of Ohio Northern University with a bachelor's degree in International Theatre Production, Musical Theatre, and French. While in the theatre department, he focused on Technical Direction studying under the former Technical Director of the Goodman Theatre in Chicago. He worked as the resident lighting and sound designer at Findlay High School for ten years and the resident technical director and scenic designer at The Findlay YouTheatre for four years. He moved to Columbus five years ago with the love of his life, Michelle, and started as the Technical Director at Columbus Children's Theatre in August of 2018. He and his wife just recently had their second child. In addition to running the scene shop at CCT, Isaac also frequently serves as a sound and projection designer and teaches production classes. Isaac is honored to be working with the amazing team on this production.

THE CONTEMPORARY STAFF BIOS

LEDA HOFFMANN [SHE/HER] (**Artistic Director**) is in her fourth season as The Contemporary's Artistic Director. Directing credits at The Contemporary include *POTUS*, *9 to 5 The Musical*, *Indecent*, *Head Over Heels*, *Mr Burns: a post-electric play*, *An Iliad*, the reading of *George and the Hidden Dragon*, and the virtual production of *A Columbus Christmas Carol*. Previously, Leda was Artistic Director at Strawdog Theatre Company in Chicago. Before that, Leda served on Milwaukee Rep's artistic staff for seven years, working in the Education and Literary departments and founding Milwaukee Rep's Community Engagement Department. Also in Milwaukee, as the Artistic Director of Luminous Theatre, Leda produced and directed site-specific productions of *Mr. Burns: a post-electric play* and *The Penelopiad*. Leda's work as a director has been seen across the country at Milwaukee Rep, Illinois Shakespeare Festival, Texas Shakespeare Festival, University of Miami, Door Shakespeare, Milwaukee Chamber Theatre, Renaissance Theaterworks, Jedlicka Performing Arts Center, Northbrook Theatre, The Alchemist Theatre, Max and Louie Productions, and Riverside Theater Iowa City. Leda has also been a teaching artist for over ten years, directing youth and teaching with Hartford Stage, Milwaukee Rep, Mudlark Theater, Northbrook Park District, and Skyline Studios. Leda is a proud graduate of Grinnell College, a former Milwaukee Rep directing resident, Hartford Stage apprentice, SDCF Observer and a member of Lincoln Center Theater Directors Lab.

THE CONTEMPORARY STAFF BIOS (CON'TD)

CHRISTY FARNBAUCH [SHE/HER] (**Executive Director**) became The Contemporary's executive director in April 2020. She is a highly respected leader in central Ohio's arts and cultural sector, as well as nationwide. Her professional journey has included managing funding and programs for the Ohio Arts Council, building community partnerships for Hilliard City Schools, managing a first-of-its-kind national study of jazz audiences, and serving as executive director of an association for women business owners. She founded her consulting business in 2006 to support nonprofits and small businesses through strategic planning, board development, and fundraising. Her entrepreneurial and innovative mindset has led to the creative transformation of organizations while strengthening their governance structures. Christy holds degrees from Otterbein University in music performance and business administration.

STEVE HILLER [HE/HIM] (**Education Director**) became The Contemporary's education director in April 2023. He has over 15 years experience working in non-profit with a focus on youth and family programming and development, training and leadership and fostering community partnerships. Steve has chaired and served on different advisory boards and currently serves as a board member for a Columbus non-profit organization. He also has over 10 years of experience working in secondary and post-secondary education. Steve was born in Seoul, Korea and has lived most of his life in Ohio. He has a bachelor's degree in education from Ohio State and is a buckeye for life. In his free time, Steve enjoys playing piano and acoustic guitar, various outdoor activities, trying new foods and spending time with family and friends.

BETH GRAHAM [SHE/HER] (**Development Manager**) is a Columbus native and longtime fan of The Contemporary. She has served in various fundraising roles with arts organizations in town including the Columbus Symphony and most recently the Columbus Association for the Performing Arts (CAPA) where she has been a partner to The Contemporary for the last three years. Beth also held a fellowship with the Ohio Arts Council following graduation from Miami University with a degree in Arts Management and Media Culture Studies. She loves supporting local and has even worked for a local jewelry store, Red Giraffe Designs. In her free time, she likes to read, take walks in her neighborhood of Harrison West, and spend time with her rescue cat, Ivy.

THE CONTEMPORARY STAFF BIOS (CON'TD)

SUMMIT J STARR [SHE/THEY] (**Administrative & Casting Coordinator**) is a Columbus-based artist with a Bachelor of Arts in Theatre & Dance from The College of Wooster. She is the lyricist/vocalist for FOX+RAM and lead singer for the cover bands Boombox Riot & Level Up!. Additionally, she is the COO of Photography for RockDaddyDesign and was previously the Assistant to the Vocal Director at ShadowboxLive. As of 2013, she has been a member of Teatro Travieso/Troublemaker Theatre and has performed internationally with their social justice production *Women of Ciudad Juárez*.

JOY HEINO [SHE/HER] (**Education Coordinator**) is a highly skilled artist educator, with more than five years' experience facilitating after-school learning, pre-school, and early age childcare programs. Additionally, she works in various elementary and middle schools in central Ohio as the director of their school musicals. Joy has worked in the Columbus theatre scene with companies such as CCT, The Actor's Theatre of Columbus, and Short North Stage. She is a member of the Actor's Equity Association as a Stage Manager and Assistant Stage Manager. Prior to joining The Contemporary as Education Coordinator, Joy has worked as a sound designer on recent productions. Joy also serves as the Founder and Producing Director of Free Range Productions, whose mission is to educate and introduce young people living in rural communities to the arts. She holds a Bachelor of Arts degree from Wittenberg University in Theatre, Technical Theatre, and Music.

LESLIE WRIGHT [SHE/HER] (**House Manager**) joins The Contemporary Theatre of Ohio team with previous experience in customer service and hospitality. She is the Owner and Creative Director for Whimsical Designs, a bakery and custom event decor shop in Reynoldsburg, Ohio. Leslie holds a Bachelor's degree in Graphic Design from Southern New Hampshire University and a Culinary Arts Degree specializing in pastry arts. She is a Columbus native, currently residing in Reynoldsburg with her husband, seven children, and two fur babies. Being an active member of various organizations helped shape and develop her passion for working with others.

The
Contemporary
Theatre of Ohio

EDUCATIONAL
PROGRAMMING
at The Contemporary

EXPLORE your
creative
side through Camps and
Acting Classes for every
interest, age, and skill level.



TheContemporaryOhio.org/Education



ART
MAKES
COLUMBUS

TAKE A SELF-GUIDED PUBLIC ART TOUR

COLUMBUS

Columbus Love, Alex Haldi,
part of the South Discovery District
Public Art Tour

Available for North and South Discovery Districts,
Franklinton, Hilltop, Short North and more!

ColumbusMakesArt.com/Tours

More than a business[®]

We make it a priority to help the communities where our associates, members and partners live and work. That's why Nationwide is proud to support The Contemporary Theatre of Ohio.

Learn more at:

nationwide.com/corporatecitizenship



Nationwide, the Nationwide N and Eagle, Nationwide is on your side and More than a business are service marks of Nationwide Mutual Insurance Company. © 2023 Nationwide CPO-1959AO (10/23)

Tasty Dawg Proudly Supports



The Contemporary Theatre of Ohio

10% OFF
+ 10% DONATION
= 1 GREAT DEAL!

PROMO: CTO2023

Fancy a scrumptious meal that's deliciously charitable? Just use the above promo code at checkout, and hey presto! You'll score a 10% discount on your tab, while we'll match that amount and donate it to The Contemporary Theatre of Ohio! So, dig in and do good, folks!

- Valid on in-store for dine-in or take-out or via www.tasty-dawg.com
- Valid through 12/31/2023

www.tasty-dawg.com

107 S High St, Columbus, OH 43215

614-962-6967

ProMusica
CHAMBER ORCHESTRA

2023-24

SEASON

A DECADE WITH DAVID DANZMAYR AND VADIM GLUZMAN

SEASON RUNS THROUGH MAY.

For tickets: 614.464.0066 ext. 101 | promusicacolumbus.org

THE CONTEMPORARY DONORS & SPONSORS

The Contemporary is Grateful. Each year, we receive many generous gifts from individuals and organizations in our community. These gifts increase The Contemporary's capacity to create transformative experiences both on and off the stage. It is our pleasure to recognize these individuals and organizations that support the work we do in bringing the magic of theatre to life.

CORPORATE, FOUNDATION, & GOVERNMENT SUPPORT

\$25,000+

The Columbus Foundation
Theodore R. Magnuson Fund and Ella Richey Wells Fund
Greater Columbus Arts Council
Nationwide
Ohio Arts Council
The Shubert Foundation

\$10,000–\$24,999

Barbasol Foundation
The Harry C. Moores Foundation
Martha Holden Jennings Foundation
The Robert Weiler Company

\$5,000–\$9,999

American Electric Power
City of Columbus
The Columbus Women's Commission
L Brands Foundation
Office of Budget and Management
Thompson Hine LLP
Turner Construction Company

\$2,500–\$4,999

Asset Strategies Group, LLC
Crabbe, Brown & James LLP
E2 Optics
Community Strategy Partners, LLC.
Kathleen M. Fox
Helen Nutis Jewish Arts Fund
Huntington National Bank
Ohio Humanities Council
Vorys, Sater, Seymour
and Pease LLP

Up to \$2,500

KeyBank Foundation
McKesson
Sprint Electric Inc
In memory of Bob Biondi
Nucor Building Systems
In memory of Bob Biondi
Restaurant Equipppers
In memory of Bob Biondi
Value Recovery Group
In memory of Bob Biondi

In Kind Support

Heartland Bank
King Business Interiors

THE CONTEMPORARY DONORS & SPONSORS

INDIVIDUAL SUPPORT

\$5,000+

Jeff Keyes & Alex Mollhoff
Mary Lazarus
Lurie Family Charitable Fund of The Columbus Foundation
Brad & Christina Richey
Barbara Trueman

\$2,500-\$4,999

Blythe Coons
Michael Griffaton & Debbie Costa
Donna & Larry James
Jeff & Wendy Luedke
Mary Yerina & Bob Redfield

\$1,500-\$2,499

Sonya Brown
Lynn & Ted Coons
Alexa Konstantinos
Trip & Lexie Lazarus
Joshua Schonauer
Denise & Michael Wible

\$1,000-\$1,499

Mark & Mary Barbash
Beth Crane & Richard McKee
Fred & Howard Fund for CATCO
Ed & Chasity Hofmann
Ginni D. Ragan
David R. Schooler
Carter Stewart & Michelle Alexander
Nancy Strause
Ralph & Joan Talmage
Ty & Jutta Wait
Gail Walter & Allen Proctor Family Fund of The Columbus Foundation
Tim Wilson & Aaron Grimes

\$500-\$999

Anonymous
Teri & Mark Berliner
Joan Campbell & Ben Branch

THE CONTEMPORARY DONORS & SPONSORS

INDIVIDUAL SUPPORT

Christy & Eric Farnbauch

Dr. Mary Filice

Robert Fry

Jack Gold & Jeff Griss

Josh & Natalie Halter

Leda Hoffmann & Katherine Simon

Ruth Milligan & Dave Daiber

In honor of Blythe Coons

Sam & Lori Nahem

George & Peg Steele

Michael & Hilary Talis

\$250-\$499

Bob & Tina Fisher

Jason Gay

Susan Hartmann

Pamela Hill & Michael Lorr

Steven Hillyer

Jane M. Leiby Fund of The Columbus
Foundation

Brenda & Steve McCoy

Kent & Kathy McIntyre

Bob Palmer

Edward & Melinda Sadar

Margaret & William Stadtlander

Jennifer Stump & Dennis Papp

Shiloh & Dimiter Todorov

Barbara & Bob Young

Kurt Zielenbach

\$100-\$249

Carol Argiro

Leonard & Rosanne Baird

Janet Barker

Eugene & Nancy Boyd

Lavea Brachman & Andrew Smith

Herb & Beverly Brown

Sharelle Buyer

Frank & Kathy Cordray

Judith Daso

Christine Dilley

In honor of Christy Farnbauch

Jim & Sue Farmer

THE CONTEMPORARY DONORS & SPONSORS

INDIVIDUAL SUPPORT

Kyle Farnbauch	Craig & Judy Mosier
JoAnn Giardino & Patricia Ryan	Patricia Moss
Karen L. Gillmor	Brad Myers & Steve Rowlands
DeeDee & Herb Glimcher	Rob Myers
Keri & David Graham	In memory of Bob Biondi
In honor of Toni Graham	Nancy Nikiforow & Brent DeVore
Bryan Griffith	Brad Ostroff
Gunther Family Fund of The Columbus Foundation	Jim & Martha Owens
Kathryn Haller & Jeffrey Johnson	Linda M. Royalty
Gayle & Vince Herried	Laurie Schmidt-Moats & Tim Moats
Roger & Betty Hyatt	Madeline Shaw & Stan Durkin
Michael & Meg Kelley	Anne C. Sidner
Tony Koehler & Javier Rodriguez	Richard & Sheri Swisshelm
Laurie A. Kopec & Mark Vonder Haar	Nancy Verber
Kelly & Jason Laipply	Beverly Vogeley
William & Christina Logan	Adam & Kathleen Wagenbach
David Long & Sally Wood	Cindy Young
William & Agnes Martin	In memory of Bob Biondi
Cameron & Molly Mitchell	Susan Yutzey
	Linda & David Zuby



**HEARTLAND
BANK**

Member
FDIC

Where banking *really* feels good...

Visit us online at **Heartland.Bank**
#BankLocal

THE ROBERT WEILER COMPANY

APPRAISAL | BROKERAGE | CONSULTING | DEVELOPMENT

Proud Supporters of The Contemporary Theatre of Ohio for over 35 years!



Central Ohio's Trusted Commercial Real Estate Experts Since 1938



**THE ROBERT
WEILER
COMPANY**

10 N High Street, Suite 401
Columbus, Ohio 43215
614-221-4286
www.rweiler.com



SUPPORT *LIVE* THEATRE



As a 501(c)3 nonprofit organization, we depend on additional investments and contributions from many individuals in our community. Revenue from ticket sales covers only about 60% of what it costs to produce high quality, professional theatre for you. Your additional support allows us to create thoughtful and engaging experiences both on and off our stages.

By making an investment in The Contemporary today, you are supporting our mission to produce high-quality, relevant theatre, by hiring local talent. In addition, we engage students of all ages across the community with our educational programs.

**As you challenge us to *DO BETTER*,
THINK DEEPER, and laugh louder, we
hope that we inspire you to do the same.**

We gratefully acknowledge
our season sponsors and supporters!

Presenting Sponsor

ON OUR SLEEVES[®]

The Movement for Children's Mental Health

Pay What You Want Sponsor

**RW THE ROBERT
WEILER
COMPANY**
Appraisal Brokerage Consulting Development

Season Sponsor



Funding Provided By:



Media and
Advertising Partners



Supporting
Sponsors

Ellie Mental Health
Steven C. Anderson
Fund for New Work for
Young Audiences

Season Support



THE COLUMBUS
FOUNDATION



THE SHUBERT
FOUNDATION INC.

Wondering *What's Next?*

SKELETON CREW

WRITTEN BY DOMINIQUE MORISSEAU
DIRECTED BY RAYMOND O. CALDWELL

Riffe Center
Studio Two

**FEB 29–
MARCH 17**

