

The  
Contemporary  
Theatre of Ohio

(formerly CATCO)

# RIDE THE CYCLONE

APRIL 18—  
MAY 5

Riffe Center  
Studio One

BOOK, MUSIC & LYRICS BY  
**JACOB RICHMOND  
AND BROOKE MAXWELL**

DIRECTED BY  
**LEDA HOFFMANN**



Pay What You Want  
Sponsor



Appraisal Brokerage Consulting Development

Season Sponsor



Nationwide  
is on your side

Season Support



THE COLUMBUS  
FOUNDATION



THE SHUBERT  
FOUNDATION, INC.

Advertising  
Partners



Supporting  
Sponsors



Appraisal Brokerage Consulting Development

THOMPSON  
HINE

Production  
Support  
Provided by  
Rinehardt  
Injury  
Attorneys

TheContemporaryOhio.org



The  
Contemporary  
Theatre of Ohio

# LAND ACKNOWLEDGMENT

We seek to inspire a community of empathy and have a responsibility to recognize the ways in which we benefit from colonization, both historical and ongoing. A Land Acknowledgment is a formal statement that recognizes and respects Indigenous Peoples as traditional stewards of this land and celebrates the resilience and strength that all Indigenous people have shown worldwide.

We acknowledge that in Central Ohio, we are on the traditional homelands of the Shawnee, Potawatomi, Delaware, Miami, Peoria, Seneca, Wyandotte, Ojibwe, and Cherokee Indigenous nations who have strong ties to these lands. Today, individuals from a broad range of Indigenous backgrounds call Columbus and central Ohio home.

We recognize generations who contributed their traditions, hopes, and spirit to make the history that led to this moment. While some have lived on this land for more generations than can be counted, others arrived here hoping for a better life, while others were forcibly taken and brought here against their will. Acknowledging the truth of these realities is critical to building mutual respect and connection.



@OHIOARTSCOUNCIL | #ARTSOHIO | [OAC.OHIO.GOV](http://OAC.OHIO.GOV)



# EXPERIENCE ENGAGE TRANSFORM

State and federal dollars through the Ohio Arts Council supported your arts experience today.

WHERE WILL THE ARTS TAKE YOU NEXT?  
VISIT [ARTSINOHIO.COM](http://ARTSINOHIO.COM)



## A NOTE FROM THE DIRECTOR

Welcome to *Ride the Cyclone*!

It has been nine years since I first sat in a theatre and experienced this show. Since that day, not a week has gone by where I didn't think about it. The joyous moments, the heartfelt moments, and the music - so much of the music - playing round and round in my head. With that, it is a dream come true to be directing this play and sharing it with all of you.

In the last nine years, and even more so in the last couple years, this play has captured the hearts and minds of thousands of people. People have seen it at theatres across the country, watched clips of it online, and entered the world of The Amazing Karnak and these six incredible teenagers.

I remember the first time I heard about this play and thinking "who writes a play about a roller coaster accident?!" But we live in a world where young people's lives are cut short, where people die too soon, and this play, in its unique way, gives us a chance to process that.

We hear in the play, "to say if one dies young, they die needlessly - that is to discount the years they had." This is a celebration of the lives we lead, no matter how young or how old and cherishing every moment. Who do we want to be? The young people on The Cyclone are all such incredible individuals. When you get a chance to look closer, you see how unique, beautiful, and strange each life is. I'm so excited to welcome you into their worlds.

Enjoy the ride!  
Leda Hoffmann



## THE CONTEMPORARY BOARD OF DIRECTORS

### EXECUTIVE COMMITTEE

**Ed Hofmann, *President***  
ASG-Chute Gerdeman

**Joshua Schonauer, *Vice President***  
Nationwide

**Blythe Coons, *Secretary***  
Articulation, Inc.

**Kathleen M. Fox, *Treasurer***  
Community Strategy Partners, LLC

### DIRECTORS

**Bill Balderaz, Futurety**

**Drew Factor, The Ohio State University  
Alumni Association**

**Mary Filice, Dr. Mary, LLC**

**Katerina Fuller, Transit Arts**

**Christopher Green,  
Crabbe Brown & James, LLP**

**Dr. Jeff S. Keyes,  
Central Ohio Newborn Medicine, Inc.**

**Alexa Konstantinos, The College of Wooster**

**Brad Richey, Turner**

**Timothy S. Wilson,  
Kohrman Jackson & Krantz, LLP**

---

## THE CONTEMPORARY STAFF

**Leda Hoffmann, Artistic Director**

**Christy Farnbauch, Executive Director**

**Steve Hiller, Education Director**

**Tony Koehler, Production Manager**

**Summit J Starr, Administrative & Casting Coordinator**

**Joy Heino, Education Coordinator**

**Leslie Wright, House Manager**

---

## THE CONTEMPORARY / CAPA | ADMINISTRATIVE STAFF

**Michael Daniels, Senior Accountant**

**Rhea Shaffer, Director of Ticketing**

**Amanda Wheeler, Grants Manager**

**Buffy Perlman, Director of Human Resources**

**Chris Wallace, Payroll & Benefits Accountant**

**The  
Contemporary  
Theatre** of Ohio

presents

Leda Hoffmann  
**ARTISTIC DIRECTOR**

Christy Farnbauch  
**EXECUTIVE DIRECTOR**

*BOOK, MUSIC & LYRICS BY*  
**JACOB RICHMOND  
AND BROOKE MAXWELL**



**RIDE** THE  
**CYCLONE**

*DIRECTED BY*  
**LEDA HOFFMANN**

Malik Khalfani  
**MUSIC DIRECTOR**

Courtney O'Neill+  
**SCENIC DESIGNER**

Lee Fiskness+  
**LIGHTING DESIGNER**

Dave Wallingford  
**SOUND DESIGNER**

Jaclyn Benedict\*  
**STAGE MANAGER**

Annie Jo Fischer  
**CHOREOGRAPHER**

Tabitha Abney  
**COSTUME DESIGNER**

Alex Oliszewski  
**MEDIA DESIGNER**

Katherine Simon  
**PROPS DESIGNER**

Ellie Price  
**ASSISTANT STAGE MANAGER**

The videotaping or other video or audio recording of this production is strictly prohibited.

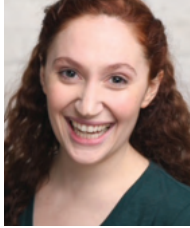
# CAST

## KARNAK



**BRIAN C. GRAY** he/they

## OCEAN



**BECKY KEESHIN\*** she/her

## MISCHA



**GEORGE LORIMER** he/him

## NOEL



**NICHOLAS MCINTURFF** he/they

## RICKY



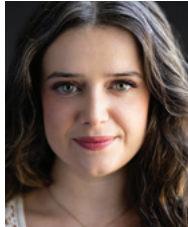
**J'VON JONES** he/they

## CONSTANCE



**SHAUNA MARIE** she/her

## JANE DOE



**MACKENZIE LELAND** she/her



\*Actors and Stage Managers appear courtesy of the Actors' Equity Association.

+ Member of United Scenic Artists



---

# MUSICIANS

Malik Khalfani **KEYS I**, Jonathan Fuller **KEYS II**,  
Luis Gonzales **GUITAR**, William Mayer **DRUMS**, Sara Smith **CELLO/BASS**

---

# ADDITIONAL PRODUCTION STAFF

Tony Koehler  
**PRODUCTION MANAGER**

Rowan Winterwood  
**MASTER ELECTRICIAN**

Augusta Kinzel  
**COSTUME COORDINATOR & WARDROBE**

Jessica Morgan  
**INTIMACY DIRECTOR**

Angelina Steshenko  
**DIALECT COACH**

Kelsey Gallagher  
**ASSOCIATE LIGHTING DESIGNER**

Jesse Charles  
**ASSOCIATE SOUND DESIGNER AND  
SOUND BOARD OPERATOR**

Sunny Walton  
**FOLLOW SPOT OPERATOR**

Set Built by CCT Scenic

---

# SPECIAL THANKS:

Mark Boughton - Tasty Dawg, Mary Filice, Brad Richey, Cheryl Hoffmann,  
Fran Leland, Joanne Mahendran, Matthew Paradis

## CAST BIOS

**BRIAN C. GRAY** [HE/THEY] (**KARNAK**) is a singer/actor living on the East Side of Columbus. Brian carries two music degrees: a Bachelor of Music in Vocal Performance from Otterbein University, and a Master of Music in Music Theatre from Oklahoma City University. Post graduating Brian performed with various theatre companies including Playhouse on the Square in Memphis, TN, Lexington Children's Theatre in Lexington, KY, and the Springer Opera House in Columbus, GA. Locally, Brian has performed in numerous theatre productions with several companies, including: The Contemporary (previously CATCO), Columbus Children's Theatre, Available Light Theatre, Short North Stage, and more. Brian now teaches as part of the Adjunct Voice Faculty at Otterbein University and directs the OutLoud BIPOC Theatre Collective at Olentangy Orange High School in central Ohio.

**BECKY KEESHIN\*** [SHE/HER] (**OCEAN**) Credits include *The Band's Visit* (Writers Theatre and Theatre Squared), *As You Like It*, *The Old Man and The Old Moon* (Door Shakespeare); *ShakesFest!* (Chicago Shakespeare Theatre), *Fiddler on the Roof* (Lyric Opera of Chicago); *Indecent* (Contemporary Theatre of Ohio), *Nunsense* (Porchlight Music Theatre), *Tuck Everlasting*, *Mockingbird and Auntie Claus* (Nashville Children's Theatre); *A Little Night Music* (Writers Theatre) and others with Marriott Theatre, First Folio, and A Red Orchid Theatre. She holds a BFA in Acting from the Theatre School at DePaul University. Proud AEA Member and represented by DDO Artists Agency. Love to David and Thriller.

**GEORGE LORIMER** [HE/HIM] (**MISCHA**) is thrilled to be making his debut at The Contemporary Theatre of Ohio in *Ride the Cyclone!* Previous credits include, *Titanic*, *A Christmas Carol*, *As You Like It* (Milwaukee Rep), *Harriet Tubman and the Underground Railroad* (VA Rep on Tour), *Macbeth*, *Much Ado About Nothing* (Summit Players Theatre), *SpongeBob: the Musical*, *Anatole* (First Stage), *Pirates of Penzance* (Ohio Light Opera). George is also a founding member and executive producer of Vanguard Productions, an independent theatre in Milwaukee which recently produced *All is Calm: The Christmas Truce of 1914*. He is a proud graduate of the College of Wooster. ig: @george\_lorimer\_



## CAST BIOS (CONT'D)

**NICHOLAS MCINTURFF [HE/THEY] (NOEL)** is elated to make his debut on the Contemporary stage. Nicholas has recently been seen as Carmen Ghia (*The Producers*) and Motel (*Fiddler on the Roof*). Other favorite roles include Frederic (*Pirates of Penzance*), Frederick (*Young Frankenstein*), Mary Sunshine (*Chicago*) and Noel (*Ride the Cyclone*). Nicholas studied Music and Theatre at Muskingum University. They express their sincerest gratitude to their friends, cast, crew, creative team, Lucas, and the Columbus theatre community.

**J'VON JONES [HE/THEY] (RICKY)** is a 22 year old actor and musician born and raised in Columbus, Ohio. J'Von has most recently been credited as Neville Landless in *The Mystery of Edwin Drood* with Imagine Productions. Prior to, he has been involved in productions with Opera Columbus, The Columbus Children's Theater, and The Little Theatre off Broadway. In addition to his passion for music and theatre, J'Von loves to cook, watch movies and meet new people. He would like to thank God for his grace, mercy, and his love as well as everyone supporting him in the audience at this performance.

**SHAUNA MARIE [SHE/HER] (CONSTANCE)** is a human. She is fortunate enough to get to play onstage with other humans. The last time she was onstage with other humans was as Irene Molloy in *Hello, Dolly!* at the Renaissance Theatre in Mansfield featuring Jennifer Simnard and Jeff Richmond. She is so pumped to ride this deadly ride with this sickening cast and would like to thank Noah, her companion human, for his endless love and support. Enjoy the ride, y'all!

**MACKENZIE LELAND [SHE/HER] (JANE DOE)** a Columbus performer and is excited to be joining The Contemporary for the first time this spring in *Ride the Cyclone*. Local credits: Belle (*Beauty and the Beast*), Emily (*Our Town*), Bonnie (*Bonnie and Clyde*), Olive (*Spelling Bee*), and Mary (*Mary Poppins*). She has also recently worked as a touring actor and teaching artist with CCT. Mackenzie is a huge fan of roller coasters, vintage clothing, and pho. She thanks her family and Matthew for all their love and support.

## PRODUCTION STAFF BIOS

**LEDA HOFFMANN** [SHE/HER] (**Director**) is in her fourth season as The Contemporary's Artistic Director. Directing credits at The Contemporary include *POTUS*, *9 to 5 The Musical*, *Indecent*, *Head Over Heels*, *Mr Burns: a post-electric play*, *An Iliad*, the reading of *George and the Hidden Dragon*, and the virtual production of *A Columbus Christmas Carol*. Previously, Leda was Artistic Director at Strawdog Theatre Company in Chicago. Before that, Leda served on Milwaukee Rep's artistic staff for seven years, working in the Education and Literary departments and founding Milwaukee Rep's Community Engagement Department. Also in Milwaukee, as the Artistic Director of Luminous Theatre, Leda produced and directed site-specific productions of *Mr. Burns: a post-electric play* and *The Penelopiad*. Leda's work as a director has been seen across the country at Milwaukee Rep, Illinois Shakespeare Festival, Texas Shakespeare Festival, University of Miami, Door Shakespeare, Milwaukee Chamber Theatre, Renaissance Theaterworks, Jedlicka Performing Arts Center, Northbrook Theatre, The Alchemist Theatre, Max and Louie Productions, and Riverside Theater Iowa City. Leda has also been a teaching artist for over ten years, directing youth and teaching with Hartford Stage, Milwaukee Rep, Mudlark Theater, Northbrook Park District, and Skyline Studios. Leda is a proud graduate of Grinnell College, a former Milwaukee Rep directing resident, Hartford Stage apprentice, SDCF Observer and a member of Lincoln Center Theater Directors Lab.

**MALIK KHALFANI** [HE/HIM] (**Music Director & Keys I**) Toledo native Malik Khalfani is an award-winning music director currently residing in Columbus, Ohio. His work has been seen at Indiana University, The Ohio State University, Kent State University, Playhouse Square, Cornwell's Dinner Theatre, Akron Civic Theatre, Near West Theatre, Toledo Repertoire Theatre, Cutting Edge Theatre Company, the Toledo School for the Arts and others. Currently down the road pursuing his DMA in Orchestra Conducting from The Ohio State University, Malik works extensively as a music director of musical theatre and symphonic works, and is also the owner of Columbus Musicians, LLC. Malik thanks his wonderful creative teammates, Leda and AJ, as well as all the other creatives at The Contemporary that have made putting up this show such a joyous and rewarding journey.

**ANNIE JO (AJ) FISCHER** [SHE/HER] (**Choreographer**) is a Columbus and Chicago-based teaching artist, choreographer, adjudicator, and member of Actor's Equity. AJ holds a BFA in Dance from the Peck School of the Arts, has studied with the Jump Rhythm Jazz Project, performed professionally at The Marriott, Drury Lane, Paramount, Ordway, and Fireside Theaters, traveled with the Honey Taps, and choreographed 100+ musicals on various Chicagoland stages. AJ continues to teach at studios, schools, competitions, conventions, and in guest artist workshops across the country, specializing in tap and musical theatre. Thanks to Becky for the creative connection, and Leda and Malik for this beautiful collaboration!

## PRODUCTION STAFF BIOS (CONT'D)

**COURTNEY O'NEILL+** [SHE/HER] (**Scenic Designer**) Design credits include: Great Lakes Theatre, Cleveland Play House, Milwaukee Repertory Theater, Steppenwolf Theatre Company, Goodman Theatre, Lookingglass Theatre, Kansas City Repertory, Denver Center, Baltimore Center Stage, The Apollo Theater, Court Theatre, Idaho Shakespeare Theatre, Writers Theatre, Dallas Theatre Center, Children's Theatre Company, Marin Theatre, Round House, South Coast Repertory, among others. Courtney holds an MFA from Northwestern University, and BFA from DePaul University. She has received a Joseph Jefferson Award, USITT Scene Design Award, and Michael Maggio Emerging Designer Award. She lives in France with her husband, Kirby, and loves to spend her time cycling through the mountainside. [www.courtneyoneill.com](http://www.courtneyoneill.com)

**TABITHA ABNEY** [SHE/HER] (**Costume Designer**) Passionate and innovative theatre costume designer Tabitha Abney weaves enchanting tales through fabric and color. With a flair for storytelling, Tabi transforms characters into living works of art, from classical to avant-garde. Armed with an acute understanding of character psychology, she collaborates seamlessly with directors and actors to bring narratives to life. Adept at balancing tradition and modernity, Tabi infuses productions with visually stunning and emotionally resonant costumes, leaving an indelible mark on the stage.

**LEE FISKNESS+** [HE/HIM] (**Lighting Designer**) is based in Chicago and making his debut at The Contemporary. Credits: Off Broadway: Manhattan Theatre Club. Regional: The Old Globe, Steppenwolf, Goodman, Chicago Shakespeare, Kennedy Center, Mark Taper Forum, Cincinnati Playhouse, Emerson Colonial Theatre, Actors' Theatre, Milwaukee Rep. Opera: Chicago Lyric, San Jose, Dallas, Colorado, Portland, Kentucky, Florentine Opera. International: *The Jurassic World Exhibition* (China), *Marriage of Figaro* (Japan), *Movement Stories* (Abu Dhabi). Lee has worked on lighting teams for The Oprah Winfrey Show, The Rosie Show, The Steve Harvey Show, Fox Sports, NBC, and Chicago Bears. Lee was the Lighting Director at The Santa Fe Opera and worked with the company for 18 seasons. [www.leefiskness.com](http://www.leefiskness.com)

**ALEX OLISZEWSKI** [HE/HIM] (**Media Designer**) is an associate professor of Media Design and has a joint appointment at The Ohio State University between the Department of Theatre, Film, and Media Art and the Advanced Computing Center for the Arts and Design. His research is transdisciplinary, covering areas such as theatrical media design, new media authorship, virtual reality performance and storytelling, and experiential media system devising and development.

## PRODUCTION STAFF BIOS (CONT'D)

**DAVE WALLINGFORD** [HE/HIM] (**Sound Designer**) is happy to be designing at The Contemporary again but is really just happy to be back in a theatre. The shows he has designed at The Contemporary include *Head Over Heels*, *Five Guys Named Moe*, *Story of My Life*, *Avenue Q*, *Evil Dead: The Musical*, *Last Smoker in America*, and *The Exonerated*. Dave is a founding member of Available Light Theatre, where he has designed countless shows. He has also worked with the Williamstown Theatre Festival, BalletMet, Opera Columbus, Columbus Symphony, Human Race Theatre, Wexner Center, Bebe Miller Dance, Red Herring Productions, OSU Dept. of Dance, and OSU Dept. of Music. When not in a theatre, he can be found either running sound in a TV production truck outside a professional sports arena, or in a race car.

**KATHERINE SIMON** [SHE/THEY] (**Props Designer**) is a designer currently working on her MFA in Scenic Design at OSU. Previous props design work includes *Ragtime* (CCT), *Head Over Heels* (The Contemporary), and *Mr. Burns* (Luminous Theatre). Katherine has been on staff at theatres such as Milwaukee Rep, Shattered Globe Theatre in Chicago, and Waukesha Civic Theatre. In addition to her design work, Katherine enjoys her time as an educator. Katherine is a proud alumna of Vassar College. Upcoming set design: *The Moors* (OSU). [katherinesimondesign.com](http://katherinesimondesign.com)

**JACLYN BENEDICT\*** [SHE/HER] (**Stage Manager**) is excited to be a part of The Contemporary Theatre of Ohio's *Ride the Cyclone*. Recent stage management credits include *Beauty and the Beast* (Butterfly Guild), *A Christmas Carol* (The Contemporary), *The Sleepwalker of Holstenwall* (Columbus Children's Theatre), *POTUS* (The Contemporary), *The Wolves* (The Contemporary), *Sound of Music* (Butterfly Guild), and *Cinderella* (Butterfly Guild). Thanks to Leda, Ellie, AJ, Malik, and the incredibly talented cast and creative team for their work!

**ELLIE PRICE** [THEY/THEM] (**Assistant Stage Manager**) is so excited to be working on Ride The Cyclone. This is their first time working with the Contemporary. They are currently a student majoring in Theatre at the Ohio State University. Ellie would like to thank their siblings, parents, and friends for always supporting them.

## MUSICIANS (CONT'D)

**LUIS GONZALES** [HE/HIM] (**Guitar**) Born and raised in the Greater Los Angeles Area, Luis Gonzales settled in Central Ohio after attaining his Bachelor of Music in Music Education from Ohio Wesleyan University. While Luis enjoys playing in a wide variety of music settings, musicals are his favorite, due to the unique ability to tell a story with the emotion, presence, and atmosphere that only live art can provide. Luis currently teaches a studio of 30 students, across a variety of musical instruments. Luis hopes you enjoy the ride!

**SARA SMITH** [SHE/THEY] (**Cello/Bass**) has been freelancing in the Columbus, OH area since 2015 on cello, upright, and electric bass. This is her first time performing with The Contemporary Theatre of Ohio and first time working on this show, Ride the Cyclone, but she has worked professionally on musicals in the Columbus area since 2018. In addition to theater, Sara has worked with numerous bands in the Columbus area, recording with BDotJeff most recently, as well as Omni-tet since inception 8 years ago, and continues to bring new projects to life. While she loves the Columbus music scene, she also enjoys working on cruise ships, performing up to 7 days a week to a huge variety of guests on board and getting the chance to see the world. She hopes one day to finish writing an album. Find her on Instagram at @sarasmithmusician for updates.

**JONATHAN FULLER** [HE/HIM] (**Keyboard 2**) is a pianist, music director and singer-songwriter based out of Cleveland. He musically directed the 2007 regional premiere of Damon Intrabartolo's *bare*, and more recently musically directed table readings for Disney Theatrical. Jonathan's original music was heard in the promotional materials for the Broadway production of *Peter and the Starcatcher*, and in 2020, his song "Gathering Tide" won "Best Modern Rock Song" at the Just Plain Folks awards. His most recent LP, *When Did You Get So Damn Scared*, was released in November 2023, and was showcased live at SXSW and Rockwood Music Hall in NYC.

**WILLIAM MAYER** [HE/HIM] (**Drums**) is a graduate of the Capital University Conservatory with a BM in Music Performance. Based in Columbus Ohio, Will is keeping busy playing drums and percussion with various groups in central Ohio. Will is passionate about playing orchestral music, jazz, chamber music, Cuban/world music, and musical theatre of course. In addition to performing, he also teaches private lessons at Columbus Percussion. Will proudly endorses Sabian cymbals.

## ADDITIONAL PRODUCTION BIOS

**ROWAN WINTERWOOD** [SHE/HER] (**Master Electrician**) is a lighting designer, director, stage manager, artist educator and aerialist. She is the Associate Artistic Director and Lighting Designer/Engineer for Actors' Theatre of Columbus, where she directed *Love's Labours Lost* this past July. Selected lighting design credits include Available Light Theatre (*Everybody, Witch*), Actors' Theatre of Columbus (*Hamlet 1603, Eurydice*), Columbus Children's Theatre (*A Christmas Story*), The Contemporary (*Luchadora, Hershel and the Hanukkah Goblins*), and Denison University (*You On The Moors Now*; co-design: *Pippin, Company*)

**AUGUSTA KINZEL** [SHE/HER] (**Costume Coordinator & Wardrobe**) is a Coshocton, Ohio native. She is a recent grad from Muskingum University, where she received her B.A. in history and theatre. During her time at Muskingum, Augusta acted, designed, and worked on tech staff. Her favorite shows at Muskingum were *The Gypsy Woman* and *Seussical*. She is excited to be working at The Contemporary this season. Enjoy the show!

**ANGELINA STESHENKO** [SHE/HER] (**Dialect Coach**) is a Ukrainian-born actor, multidisciplinary artist, educator, and dialect coach who is currently pursuing her MFA in Acting at The Ohio State University, she also holds a B.A. from the University of California, Berkeley. She recently debuted her original solo show *A Searching Soul*, which offers the audience a window into her autobiographical pilgrimage through languages, immigration, and fleeing war. She previously worked with Leda Hoffmann when acting in OSU's production of *Blood Wedding*, and she was very excited to collaborate again on this project!  
Instagram: @angelinasteshenko

## THE CONTEMPORARY STAFF BIOS

**CHRISTY FARNBAUCH** [SHE/HER] (**Executive Director**) became The Contemporary's executive director in April 2020. She is a highly respected leader in central Ohio's arts and cultural sector, as well as nationwide. Her professional journey has included managing funding and programs for the Ohio Arts Council, building community partnerships for Hilliard City Schools, managing a first-of-its-kind national study of jazz audiences, and serving as executive director of an association for women business owners. She founded her consulting business in 2006 to support nonprofits and small businesses through strategic planning, board development, and fundraising. Her entrepreneurial and innovative mindset has led to the creative transformation of organizations while strengthening their governance structures. Christy holds degrees from Otterbein University in music performance and business administration.

**STEVE HILLER** [HE/HIM] (**Education Director**) became The Contemporary's education director in April 2023. He has over 15 years experience working in non-profit with a focus on youth and family programming and development, training and leadership and fostering community partnerships. Steve has chaired and served on different advisory boards and currently serves as a board member for a Columbus non-profit organization. He also has over 10 years of experience working in secondary and post-secondary education. Steve was born in Seoul, Korea and has lived most of his life in Ohio. He has a bachelor's degree in education from Ohio State and is a buckeye for life. In his free time, Steve enjoys playing piano and acoustic guitar, various outdoor activities, trying new foods and spending time with family and friends.

**TONY KOEHLER** [HE/HIM] (**Production Manager**) is teaching artist, actor, director, and designer, most recently was production manager at GALA Hispanic Theatre in Washington, D.C., and a teaching artist at The Theatre Lab School of Dramatic Arts also in Washington, D.C. Other positions include properties master at The Folger Shakespeare Theatre, and theatre credits at Constellation Theatre Company and Rainbow Theater Project in Washington, D.C., and Piven Theatre Workshop, Redmoon Theatre, and Northwestern University in Chicago. A graduate of the University of Kentucky with a BA in theatre, he has received numerous awards

## THE CONTEMPORARY STAFF BIOS (CON'TD)

including a 2019 Helen Hayes Award for Best Musical and Best Ensemble and Broadway World's 2019 regional award for Best Musical in the Small Professional Theatre Category for *FAME: The Musical*, and a 2017 Helen Hayes Award for the Spanish language premiere of *In the Heights*. In addition to his theatre background, he also has several years of business management experience as an operational manager at J.Crew.

**SUMMIT J STARR** [SHE/THEY] (**Administrative & Casting Coordinator**) is a Columbus-based artist with a Bachelor of Arts in Theatre & Dance from The College of Wooster. She is the lyricist/vocalist for FOX+RAM and lead singer for the cover bands Boombox Riot & Level Up!. Additionally, she is the COO of Photography for RockDaddyDesign and was previously the Assistant to the Vocal Director at ShadowboxLive. As of 2013, she has been a member of Teatro Travieso/Troublemaker Theatre and has performed internationally with their social justice production *Women of Ciudad Juárez*.

**JOY HEINO** [SHE/HER] (**Education Coordinator**) is a highly skilled artist educator, with more than five years' experience facilitating after-school learning, pre-school, and early age childcare programs. Additionally, she works in various elementary and middle schools in central Ohio as the director of their school musicals. Joy has worked in the Columbus theatre scene with companies such as CCT, The Actor's Theatre of Columbus, and Short North Stage. She is a member of the Actor's Equity Association as a Stage Manager and Assistant Stage Manager. Prior to joining The Contemporary as Education Coordinator, Joy has worked as a sound designer on recent productions. Joy also serves as the Founder and Producing Director of Free Range Productions, whose mission is to educate and introduce young people living in rural communities to the arts. She holds a Bachelor of Arts degree from Wittenberg University in Theatre, Technical Theatre, and Music.

**LESLIE WRIGHT** [SHE/HER] (**House Manager**) joins The Contemporary Theatre of Ohio team with previous experience in customer service and hospitality. She is the Owner and Creative Director for Whimsical Designs, a bakery and custom event decor shop in Reynoldsburg, Ohio. Leslie holds a Bachelor's degree in Graphic Design from Southern New Hampshire University and a Culinary Arts Degree specializing in pastry arts. She is a Columbus native, currently residing



## **THE CONTEMPORARY STAFF BIOS** *(CON'TD)*

in Reynoldsburg with her husband, seven children, and two fur babies. Being an active member of various organizations helped shape and develop her passion for working with others.

The  
Contemporary  
Theatre of Ohio

EDUCATIONAL  
PROGRAMMING  
at The Contemporary

**EXPLORE** your  
**creative**  
**side** through Camps and  
Acting Classes for every  
interest, age, and skill level.



[TheContemporaryOhio.org/Education](https://TheContemporaryOhio.org/Education)

ART  
MAKES  
COLUMBUS

GC  
AC

# TAKE A SELF-GUIDED PUBLIC ART TOUR

FDC

***Bobcat Godmask, Adam Hernandez,***  
part of the North Discovery District  
public art tour

Tours available for North and South Discovery Districts,  
Franklinton, Hilltop, Short North and more.

**ColumbusMakesArt.com/Tours**

# More than a business<sup>®</sup>

We make it a priority to help the communities where our associates, members and partners live and work. That's why Nationwide is proud to support The Contemporary Theatre of Ohio.

Learn more at:

[nationwide.com/corporatecitizenship](https://nationwide.com/corporatecitizenship)



**Nationwide<sup>®</sup>**  
is on your side

Nationwide, the Nationwide N and Eagle, Nationwide is on your side and More than a business are service marks of Nationwide Mutual Insurance Company. © 2023 Nationwide CPO-1959AO (10/23)

Tasty Dawg Proudly Supports



## The Contemporary Theatre of Ohio

10% OFF  
+ 10% DONATION  
= 1 GREAT DEAL!

PROMO: CTO2023

Fancy a scrumptious meal that's deliciously charitable? Just use the above promo code at checkout, and hey presto! You'll score a 10% discount on your tab, while we'll match that amount and donate it to The Contemporary Theatre of Ohio! So, dig in and do good, folks!

- Valid on in-store for dine-in or take-out or via [www.tasty-dawg.com](http://www.tasty-dawg.com)
- Valid through 12/31/2023

[www.tasty-dawg.com](http://www.tasty-dawg.com)

107 S High St, Columbus, OH 43215

614-962-6967

**ProMusica**  
CHAMBER ORCHESTRA

# 2023 -24 SEASON

A DECADE WITH DAVID DANZMAYR AND VADIM GLUZMAN

SEASON RUNS THROUGH MAY.

For tickets: 614.464.0066 ext. 101 | [promusicacolumbus.org](http://promusicacolumbus.org)



Member  
FDIC

Where  
banking *really*  
feels good...

Visit us online at [Heartland.Bank](http://Heartland.Bank)  
#BankLocal

## THE ROBERT WEILER COMPANY

APPRAISAL | BROKERAGE | CONSULTING | DEVELOPMENT

*Proud Supporters of The Contemporary Theatre of Ohio for over 35 years!*



Central Ohio's Trusted Commercial Real Estate Experts Since 1938



THE ROBERT  
WEILER  
COMPANY

10 N High Street, Suite 401  
Columbus, Ohio 43215  
614-221-4286  
[www.rweiler.com](http://www.rweiler.com)

WHO'S GOT YOUR CASE?  
**BE SMART. GET RINEHARDT.**

CALL/TEXT 419-LAW-2020  
OR VISIT [BeSmartLegal.com](http://BeSmartLegal.com)

**RINEHARDT**  
INJURY ATTORNEYS



# SUPPORT *LIVE* THEATRE

As a 501(c)3 nonprofit organization, we depend on additional investments and contributions from many individuals in our community. Revenue from ticket sales covers only about 60% of what it costs to produce high quality, professional theatre for you. Your additional support allows us to create thoughtful and engaging experiences both on and off our stages.

By making an investment in The Contemporary today, you are supporting our mission to produce high-quality, relevant theatre, by hiring local talent. In addition, we engage students of all ages across the community with our educational programs.



**As you challenge us to *DO BETTER,*  
*THINK DEEPER,* and *laugh louder,* we  
hope that we inspire you to do the same.**

# We gratefully acknowledge our season sponsors and supporters!

## Pay What You Want Sponsor



## Season Sponsor



## Media and Advertising Partners



## Supporting Sponsors



## Season Support



Production Support Provided by  
Rinehardt Injury Attorneys



On Sale Now!

Season  
2024-2025

The  
Contemporary  
Theatre of Ohio

**Big Fish** Sep 12–29, 2024

Oct 31–Nov 17, 2024

**WIFE  
OF A  
SALES  
MAN**

A  
CHRISTMAS  
CAROL Dec 12–22, 2024

Mar 6–23, 2025

**Fat  
Ham**

**THE LAST FIVE YEARS** Apr 24–May 11, 2025

## Get a Classic Subscription for \$179

Lock in our lowest price of the season with the Classic Subscription for \$179. This package gets you into *Big Fish*, *Wife of a Salesman*, *Fat Ham*, *The Last Five Years*, plus *A Christmas Carol* at no extra cost. Don't wait; this offer is limited, so save your seat today!



Scan the QR code to purchase your subscription at [CbusArts.com](http://CbusArts.com).

Find out more information at:

**[TheContemporaryOhio.org/2024-25-Season](http://TheContemporaryOhio.org/2024-25-Season)**